

Global leaders in the provision of Plastic Optical Fiber solutions and optical transceivers.

- Medical Imaging*
- Renewable Energy*
- Electric & Diesel Trains*
- Industrial Automation*
- Industrial Drives*
- Robotics*
- Smart Grid Automation*
- Home Networks*

2022 Product Catalog



Firecomms[™]



Firecomms 2022 Product Range

Accelerating the evolution of machine communication

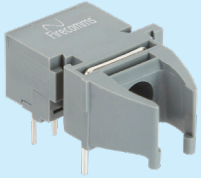
RedLink® Horizontal
RedLink® Vertical
RedLink® 30° Tilted
OptoLock® Transceivers
LC Transceivers
Media Converter & POF Switch
Evaluation Boards
Plugs
Cable Assemblies
SMI Passives
Accessories
POF Cable



RedLink® Horizontal

DC-50 MBd

Transmitter



Part Number	Orientation	Description	Supply Voltage	Life Status*
FT50MHNR	Horizontal	DC-50 MBd, 650 nm RCLED, with integrated driver, non-inverting logic	5V/3.3V	●
FT50MHIR	Horizontal	DC-50 MBd, 650 nm RCLED, with integrated driver, inverting logic	5V/3.3V	●

Receiver



Part Number	Orientation	Description	Supply Voltage	Life Status*
FR50MHIR	Horizontal	DC-50 MBd, inverting logic	5V/3.3V	●
FR50MHNR	Horizontal	DC-50 MBd, non-inverting logic	5V/3.3V	●

DC-10 MBd

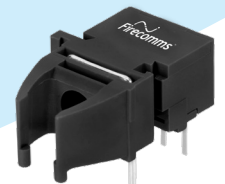
Transmitter

Part Number	Orientation	Description	Supply Voltage	Life Status*
FT10MHNR	Horizontal	DC-10 MBd, 650 nm RCLED, non-inverting logic	Analog	●
FT10MHLR	Horizontal	DC-10 MBd, low current 650 nm RCLED	Analog	●
FT10DHIR	Horizontal	DC-10 MBd, 650 nm RCLED, with integrated driver, inverting logic	5V/3.3V	●
FT10DHNR	Horizontal	DC-10 MBd, 650 nm RCLED, with integrated driver, non-inverting logic	5V/3.3V	●



Receiver

Part Number	Orientation	Description	Supply Voltage	Life Status*
FR10DHIR	Horizontal	DC-10 MBd, inverting logic	5V/3.3V	●
FR10DHNR	Horizontal	DC-10 MBd, non-inverting logic	5V/3.3V	●



* ● Recommended designs†

† Firecomms' newest innovation of our world class products.

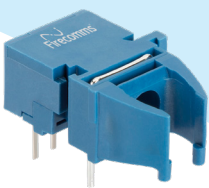
DC-5 MBd

Transmitter



Part Number	Orientation	Description	Supply Voltage	Life Status*
FT05MHNR	Horizontal	DC-5 MBd, 650 nm RCLED, non-inverting logic	Analog	●

Receiver

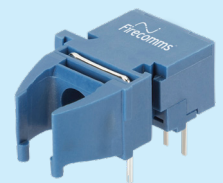


Part Number	Orientation	Description	Supply Voltage	Life Status*
FR05DHDR	Horizontal	DC-5 MBd, MOSFET output switching up to 20V, inverting logic	5V/3.3V	●
FR05DHIR	Horizontal	DC-5 MBd, with TTL I/O, dual voltage, inverting logic	5V/3.3V	●
FR05DHCR	Horizontal	DC-5 MBd, open collector output	5V/3.3V	●

DC-2 MBd

Receiver

Part Number	Orientation	Description	Supply Voltage	Life Status*
FR20DHIR	Horizontal	DC-2 MBd, 20V open collector output, inverting logic	5V/3.3V	●

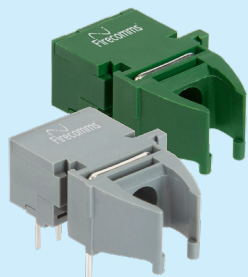


* ● Recommended designs†

† Firecomms' newest innovation of our world class products.

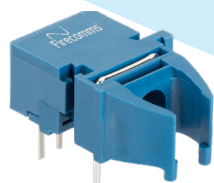
DC-1 MBd

Transmitter



Part Number	Orientation	Description	Supply Voltage	Life Status*
FT01MHNG	Horizontal	DC-1 MBd, 530 nm Green LED, non-inverting logic	Analog	●
FT01MHNR	Horizontal	DC-1 MBd, 650 nm RCLED, non-inverting logic	Analog	●

Receiver

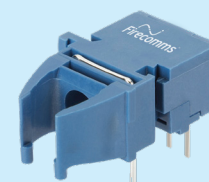


Part Number	Orientation	Description	Supply Voltage	Life Status*
FR01DHDR	Horizontal	DC-1 MBd, MOSFET output switching up to 20V, inverting logic	5V/3.3V	●
FR01DHIR	Horizontal	DC-1 MBd with TTL I/O, inverting logic	5V/3.3V	●

Analog

Receiver

Part Number	Orientation	Description	Supply Voltage	Life Status*
FR00AHAR	Horizontal	Analog, 500 um photodiode	Analog	●



* ● Recommended designs†

† Firecomms' newest innovation of our world class products.

RedLink® Vertical

DC-50 MBd

Transmitter



Part Number	Orientation	Description	Supply Voltage	Life Status*
FT50MVNR	Vertical	DC-50 MBd, 650 nm RCLED, with integrated driver, non-inverting logic	5V/3.3V	●
FT50MVIR	Vertical	DC-50 MBd, 650 nm RCLED, with integrated driver, inverting logic	5V/3.3V	●

Receiver

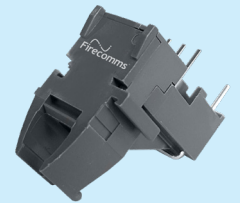


Part Number	Orientation	Description	Supply Voltage	Life Status*
FR50MVIR	Vertical	DC-50 MBd, inverting logic	5V/3.3V	●
FR50MVNR	Vertical	DC-50 MBd non-inverting logic	5V/3.3V	●

DC-10 MBd

Transmitter

Part Number	Orientation	Description	Supply Voltage	Life Status*
FT10MVNR	Vertical	DC-10 MBd, 650 nm RCLED, non-inverting logic	Analog	●
FT10MVLR	Vertical	DC-10 MBd, low current 650 nm RCLED	Analog	●
FT10DVIR	Vertical	DC-10 MBd, 650 nm RCLED, with integrated driver, inverting logic	5V/3.3V	●
FT10DVNR	Vertical	DC-10 MBd, 650 nm RCLED, with integrated driver, non-inverting logic	5V/3.3V	●



Receiver

Part Number	Orientation	Description	Supply Voltage	Life Status*
FR10DVIR	Vertical	DC-10 MBd, inverting logic	5V/3.3V	●
FR10DVNR	Vertical	DC-10 MBd, non-inverting logic	5V/3.3V	●



* ● Recommended designs†

† Firecomms' newest innovation of our world class products.

DC-5 MBd

Transmitter



Part Number	Orientation	Description	Supply Voltage	Life Status*
FT05MVNR	Vertical	DC-5 MBd, 650nm RCLED, non-inverting logic	Analog	●

Receiver

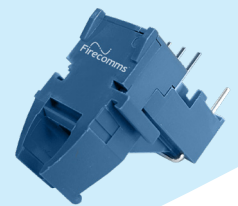


Part Number	Orientation	Description	Supply Voltage	Life Status*
FR05DVDR	Vertical	DC-5 MBd, MOSFET output switching up to 20V, inverting logic	5V/3.3V	●
FR05DVIR	Vertical	DC-5 MBd, with TTL I/O, inverting logic	5V/3.3V	●
FR05DVCR	Vertical	DC-5 MBd, open collector output	5V/3.3V	●

DC-2 MBd

Receiver

Part Number	Orientation	Description	Supply Voltage	Life Status*
FR20DVIR	Vertical	DC-2 MBd, 20V open collector output, inverting logic	5V/3.3V	●



* ● Recommended designs†

† Firecomms' newest innovation of our world class products.

DC-1 MBd

Transmitter



Part Number	Orientation	Description	Supply Voltage	Life Status*
FT01MVNR	Vertical	DC-1 MBd, 650 nm RCLED, non-inverting logic	Analog	●

Receiver

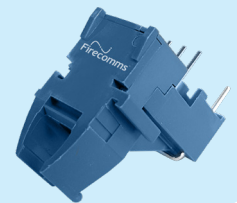


Part Number	Orientation	Description	Supply Voltage	Life Status*
FR01DVDR	Vertical	DC-1 MBd, MOSFET output switching up to 20V, inverting logic	5V/3.3V	●
FR01DVIR	Vertical	DC-1 MBd with TTL I/O, inverting logic	5V/3.3V	●

Analog

Receiver

Part Number	Orientation	Description	Supply Voltage	Life Status*
FR00AVAR	Vertical	500 um photodiode	Analog	●



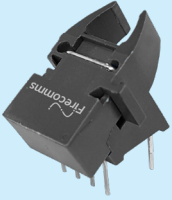
* ● Recommended designs†

† Firecomms' newest innovation of our world class products.

RedLink® 30° Tilted

DC-50 MBd

Transmitter



Part Number	Orientation	Description	Supply Voltage	Life Status*
FT50MWNR	Tilted	DC-50 MBd, 650 nm RCLED, with integrated driver, non-inverting logic	5V/3.3V	●
FT50MWIR	Tilted	DC-50 MBd, 650 nm RCLED, with integrated driver, inverting logic	5V/3.3V	●

Receiver

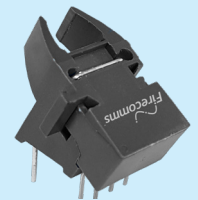


Part Number	Orientation	Description	Supply Voltage	Life Status*
FR50MWIR	Tilted	DC-50 MBd inverting logic	5V/3.3V	●
FR50MWNR	Tilted	DC-50 MBd, non-inverting logic	5V/3.3V	●

DC-10 MBd

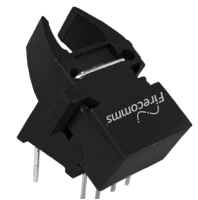
Transmitter

Part Number	Orientation	Description	Supply Voltage	Life Status*
FT10MWNR	Tilted	DC-10 MBd, 650 nm RCLED	Analog	●
FT10MWLR	Tilted	DC-10 MBd, low current 650 nm RCLED	Analog	●
FT10DWIR	Tilted	DC-10 MBd, 650 nm RCLED, integrated driver, inverting logic	5V/3.3V	●
FT10DWNR	Tilted	DC-10 MBd, 650 nm RCLED, integrated driver, non-inverting logic	5V/3.3V	●



Receiver

Part Number	Orientation	Description	Supply Voltage	Life Status*
FR10DWIR	Tilted	DC-10 MBd, inverting logic	5V/3.3V	●
FR10DWNR	Tilted	DC-10 MBd, non-inverting logic	5V/3.3V	●

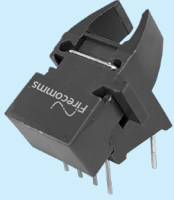


* ● Recommended designs†

† Firecomms' newest innovation of our world class products.

DC-5 MBd

Transmitter



Part Number	Orientation	Description	Supply Voltage	Life Status*
FT05MWNR	Tilted	DC-5 MBd, 650 nm RCLED	Analog	●

Receiver

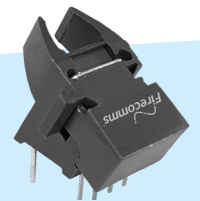


Part Number	Orientation	Description	Supply Voltage	Life Status*
FR05DWDR	Tilted	DC-5 MBd, MOSFET output switching up to 20V, inverting logic	5V/3.3V	●
FR05DWIR	Tilted	DC-5 MBd with TTL I/O	5V/3.3V	●
FR05DWCR	Tilted	DC-5 MBd, open-collector output	5V/3.3V	●

DC-1 MBd

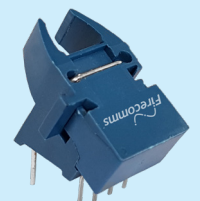
Transmitter

Part Number	Orientation	Description	Supply Voltage	Life Status*
FT01MWNR	Tilted	DC-1 MBd, 650 nm RCLED, non-inverting logic	Analog	●



Receiver

Part Number	Orientation	Description	Supply Voltage	Life Status*
FR01DWDR	Tilted	DC-1 MBd, MOSFET output switching up to 20V, inverting logic	5V/3.3V	●
FR01DWIR	Tilted	DC-1 MBd with TTL I/O, inverting logic	5V/3.3V	●



Analog

Receiver



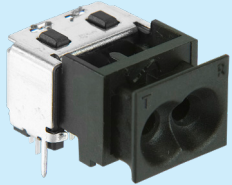
Part Number	Orientation	Description	Supply Voltage	Life Status*
FR00AWAR	Tilted	500 um photodiode	Analog	●

* ● Recommended designs†

† Firecomms' newest innovation of our world class products.

OptoLock® Transceivers

10/125/250/1250 Mbps

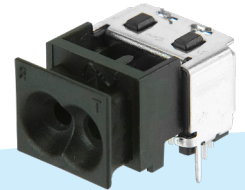


Part Number	Description	Supply Voltage	Life Status*
FB01GKUJ	OptoLock® termination 2.2 mm POF, 1.25 Gbps, SLVDS, with RSSI [§] , black	3.3V	●
FB2M5KVR	OptoLock® termination 2.2 mm POF, 10/125/250 Mbps, LVDS, with SD [§] , black	3.3V	●
FB2M5KRR	OptoLock® termination 2.2 mm POF, 10/125/250 Mbps, LVDS, with RSSI [§] , black	3.3V	●

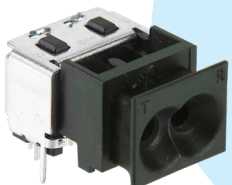
[§] For LVPECL or non-magnetic devices, please contact the Firecomms Sales & Field Applications Engineering team.

DC-50 MBd

Part Number	Description	Supply Voltage	Life Status*
FE50MKNR	OptoLock® termination, with TTL I/O. non-inverting Tx and non-inverting Rx outputs	5V/3.3V	●
FE50MKIR	OptoLock® termination, with TTL I/O. non-inverting Tx and inverting Rx outputs	5V/3.3V	●



Analog



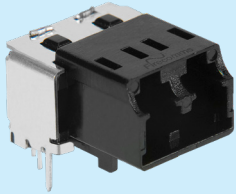
Part Number	Description	Supply Voltage	Life Status*
FB00AKAR	OptoLock® termination, 650 nm RCLED, 500 um photodiode with bare fiber	Analog	●

* ● Recommended designs[†]

[†] Firecomms' newest innovation of our world class products.

LC Transceivers

10/125/250 Mbps

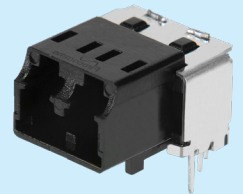


Part Number	Description	Supply Voltage	Life Status*
FB2M5LVR	LC termination, 10/125/250 Mbps, LVDS, with SD [§]	3.3V	●
FB2M5LRR	LC termination, 10/125/250 Mbps, LVDS, with RSSI [§]	3.3V	●
FB2M5LBR	LC termination, 10/125/250 Mbps FOTs, LVDS, with SD [§] , non-magnetic	3.3V	●

[§] For LVPECL applications, please contact the Firecomms Sales & Field Applications Engineering team.

DC-50 MBd

Part Number	Description	Supply Voltage	Life Status*
FE50MLIR	LC termination, and with TTL I/O. non-inverting Tx and inverting Rx outputs	5V/3.3V	●
FE50MLNR	LC termination, with TTL I/O. non-inverting Tx and non-inverting Rx outputs	5V/3.3V	●



* ● Recommended designs[†]

[†] Firecomms' newest innovation of our world class products.

Media Converter

Ethernet 100 Mbps (125 MBd)



Part Number	Description	Life Status*
FY-ENT-KSU	Ethernet Media Converter, Black, 2.2 mm Op-toLock®	●
FY-ENT-KKS	US kit includes: OptoLock® Media Converter, US power supply, USB power cable, 15 cm CAT5 cable and POF cutter	●
FY-ENT-KKL	UK kit includes: OptoLock® Media Converter, UK power supply, USB power cable, 15 cm CAT5 cable and POF cutter	●
FY-ENT-KKG	EU kit includes: OptoLock® Media Converter, EU power supply, USB power cable, 15 cm CAT5 cable and POF cutter	●

POF Switch

Ethernet 100 Mbps (125 MBd)



Part Number	Description	Life Status*
FY-ES3-KSU	4 Port Fast Ethernet POF Switch	●
FY-ES3-KKS	US kit includes: Ethernet POF Switch, US power supply, USB power cable and POF cutter	●
FY-ES3-KKL	UK kit includes: Ethernet POF Switch, UK power supply, USB power cable and POF cutter	●
FY-ES3-KKG	EU kit includes: Ethernet POF Switch, EU power supply, USB power cable and POF cutter	●

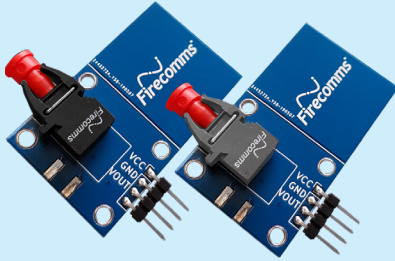
* ● Recommended designs†

† Firecomms' newest innovation of our world class products.

Evaluation Boards - RedLink®

Vertical, Tilted and other versions available can be built upon request with extended delivery times.

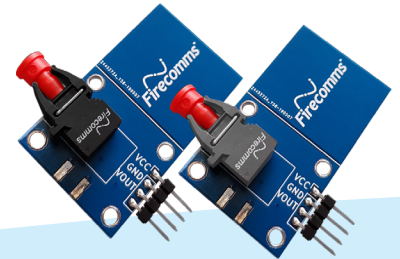
DC-50 MBd



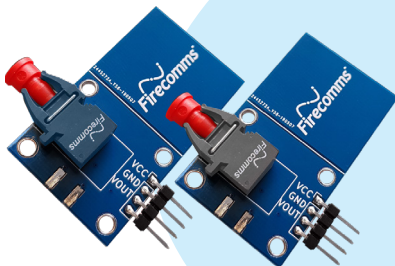
Part Number	Description
EVAL-FT50MHNR	RedLink® FT50MHNR Transmitter
EVAL-FR50MHNR	RedLink® FR50MHNR Receiver

DC-10 MBd

Part Number	Description
EVAL-FT10MHNR	RedLink® FT10MHNR Transmitter
EVAL-FR10DHIR	RedLink® FR10DHIR Receiver



DC-5 MBd



Part Number	Description
EVAL-FT05MHNR	RedLink® FT05MHNR Transmitter
EVAL-FR05DHIR	RedLink® FR05DHIR Receiver

* ● Recommended designs†

† Firecomms' newest innovation of our world class products.

Evaluation Boards - OptoLock® & LC

OptoLock® 10-1250 Mbps



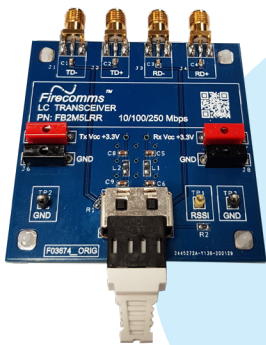
Part Number	Description
EVAL-FB01GKUJ	OptoLock® RSSI
EVAL-FB2M5KVR	OptoLock® Signal Detect
EVAL-FB2M5KRR	OptoLock® RSSI

OptoLock® DC-50 MBd

Part Number	Description
EVAL-FE50MKIR	OptoLock® Inverting Output
EVAL-FE50MKNR	OptoLock® Non-Inverting Output



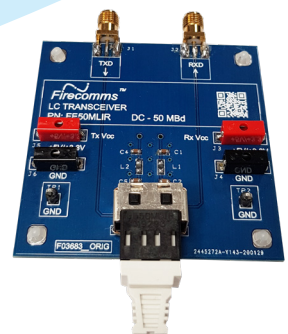
LC 10-250 Mbps



Part Number	Description
EVAL-FB2M5LVR	LC Signal Detect
EVAL-FB2M5LRR	LC RSSI

LC DC-50 MBd

Part Number	Description
EVAL-FE50MLIR	LC Inverting Output
EVAL-FE50MLNR	LC Non-Inverting Output



* ● Recommended designs†

† Firecomms' newest innovation of our world class products.

Plugs

LC plug

Part Number	Description
FP-00C-LD0	LC plug for POF
FG-00D-LZ0	LC plug dust cap



Sealed simplex friction plug



Part Number	Description
FP-00C-JS0	RedLink® simplex sealed friction plug, blue (Light-Seal®)
FP-00C-KS0	RedLink® simplex sealed friction plug, gray (Light-Seal®)

Simplex friction plugs (no latch)

Part Number	Description
FP-00C-US0	RedLink® simplex friction plug, blue (crimp ring, no latch)
FP-00C-VS0	RedLink® simplex friction plug, gray (crimp ring, no latch)



Simplex friction crimpless plugs



Part Number	Description
FP-00C-HS0	RedLink® simplex friction plug, gray (crimpless, no latch)
FP-00C-GS0	RedLink® simplex friction plug, blue (crimpless, no latch)
FP-00C-TS0	RedLink® simplex friction plug, black (crimpless, no latch)

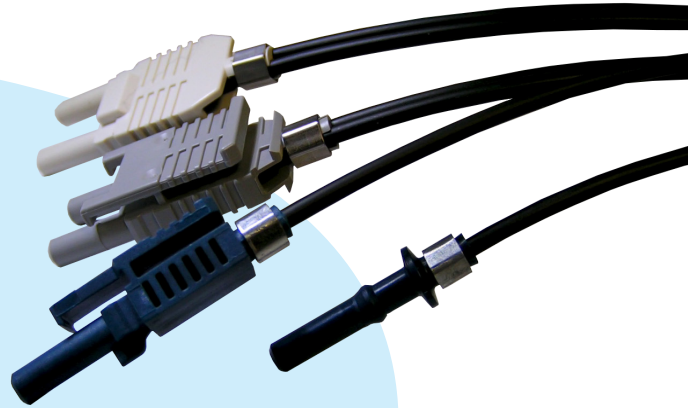
Simplex latching plugs

Part Number	Description
FP-00C-XS0	RedLink® simplex latching plug, blue (latch and crimp ring)
FP-00C-YS0	RedLink® simplex latching plug, gray (latch and crimp ring)



Light-Seal® is a registered trademark of FiberFin, Inc.

Cable Assemblies



Part Number	Description
FD-xxx-LDB	xxx m LC duplex patch cord 0.5NA SI-POF
FD-xxx-BSB	xxx m RedLink® simplex patch cable with friction plug 0.5NA SI-POF (gray and blue crimped plugs)
FD-xxx-QSB	xxx m RedLink® simplex patch cable with sealed friction plug 0.5NA SI-POF (gray and blue crimped plugs)
FD-xxx-CSB	xxx m RedLink® simplex patch cable with latch plug 0.5NA SI-POF (gray and blue crimped plugs)
FD-xxx-RDB	xxx m RedLink® duplex patch cable with duplex friction plug 0.5NA SI-POF (gray crimped plugs)
FD-xxx-SDB	xxx m RedLink® duplex patch cable with duplex latch plug 0.5NA SI-POF (gray crimped plugs)
FD-xxx-ASB	xxx m RedLink® simplex patch cable with friction plug 0.5NA SI-POF (gray and Blue crimpless plugs)
FD-xxx-PSB	xxx m RedLink® simplex patch cable with friction plug 0.5NA SI-POF (gray and Black crimpless plugs)
FD-xxx-ADB	xxx m RedLink® duplex patch cable with friction plug 0.5NA SI-POF (gray and Blue crimpless plugs)
FD-xxx-NDB	xxx m RedLink® duplex patch cable with interlocking simplex friction plugs 0.5NA SI-POF (gray crimpless plugs)
FD-xxx-PDB	xxx m RedLink® duplex patch cable with friction plug 0.5NA SI-POF (gray and black crimpless plugs)

Firecomms xxx Code

xxC
xxM
500

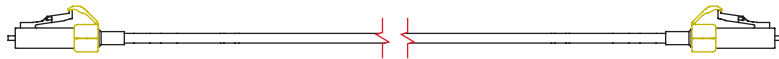
Length

xxcm patch cord (Max 99 cm)
xxm patch cord (Max 50 m)
500 m reel

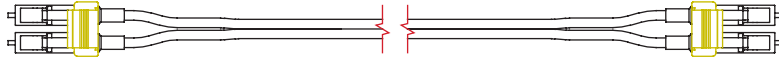
** Contact your Firecomms local sales representative for custom cables.*

Note: For example
A 30 cm patch cord would have the code 30C
A 5 m patch cord would have the code 05M

Cable Assemblies



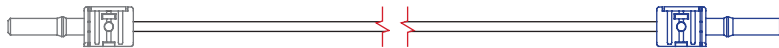
Duplex LC Plugs
FD-xxx-LDB



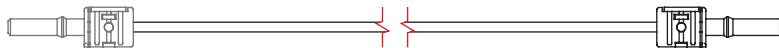
Simplex Crimped Friction Plugs
Gray & Blue, FD-xxx-BSB



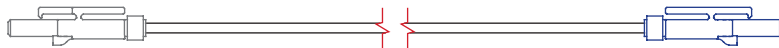
Sealed Simplex Friction Plugs
Gray & Blue, FD-xxx-QSB



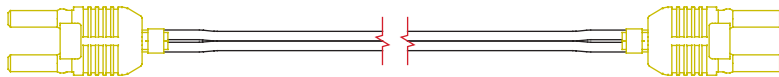
Simplex Crimpless Friction Plugs
Gray & Blue, FD-xxx-ASB



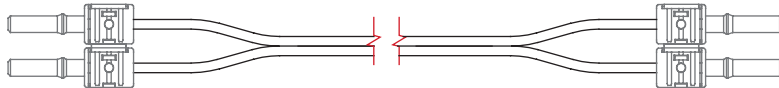
Simplex Crimpless Friction Plugs
Gray & Black, FD-xxx-PSB



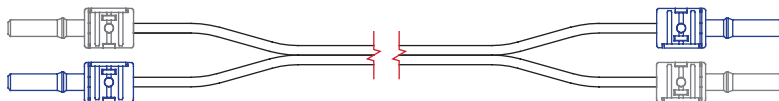
Simplex Crimped Latching Plugs
Gray & Blue, FD-xxx-CSB



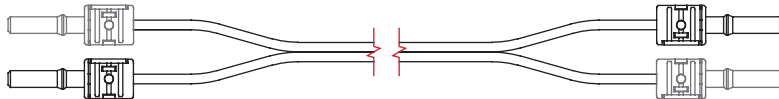
Duplex Crimped Friction Plugs
Cream, FD-xxx-RDB



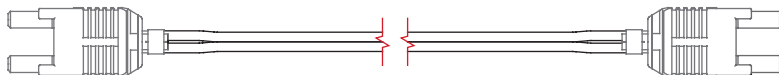
Duplex Interlocking Simplex
Crimpless Friction Plugs.
Gray, FD-xxx-NDB



Duplex Simplex Crimpless
Friction Plugs
Gray & Blue, FD-xxx-ADB



Duplex Simplex Crimpless
Friction Plugs
Gray & Black, FD-xxx-PDB



Duplex Crimped Latching Plugs
Gray, FD-xxx-SDB

Firecomms xxx Code

xxC
xxM
500

Length

xxcm patch cord (Max 99 cm)
xxm patch cord (Max 50 m)
500 m reel

** Contact your Firecomms local sales representative for custom cables.*

Note: For example

A 30 cm patch cord would have the code 30C

A 5 m patch cord would have the code 05M



SMI Passives

SMI Passive interconnect

Part Number	Description
FA-BFG-SPD	SMI Passive Interconnect for 2 x SMI plugs



SMI Long body plug



Part Number	Description
FP-00C-3F0	SMI Long Body Plug kit

SMI Short body plug

Part Number	Description
FP-00C-2F0	SMI Short body Plug kit

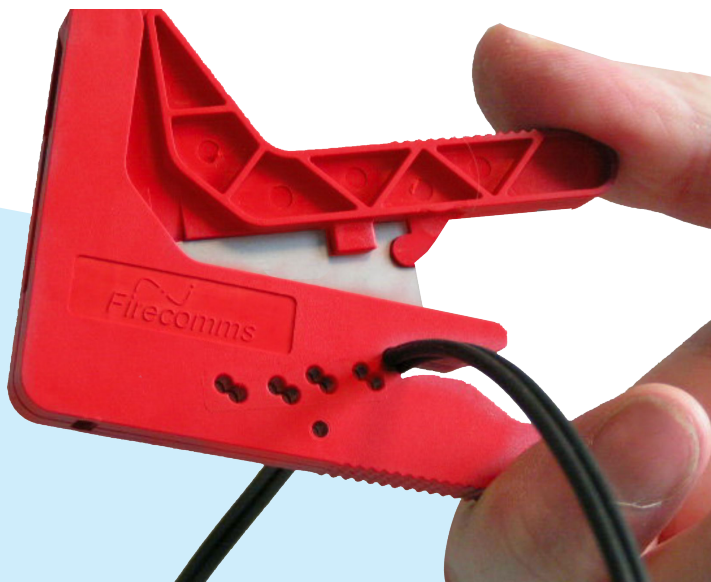


Connector release tool



Part Number	Description
FA-CRT-SSU	SMI Short body Plug/Connector Release Tool

Accessories



OptoLock® bulkhead adaptor



LC panel mounted adaptor



Part Number	Description
PC220F-410	POF cutting/termination tool
FA-BFC-KXD	Bulkhead feedthrough adaptor, Optolock®
FP-00C-LX0	LC panel mounted adaptor

Plastic Optical Fiber



Part Number	Description
FC-500-0SB	500 m Reel 0.5NA SI-POF 2.2 mm simplex
FC-500-0DB	500 m Reel 0.5NA SI-POF 2.2 mm duplex



2022 Product Catalog

www.twitter.com/Firecomms



www.linkedin.com/company/firecomms

