



## Lantronix ConsoleFlow™ Brings In-band Productivity to Out-of-band Networks

ConsoleFlow is Lantronix's on-premise and cloud-hosted management software that provides centralized management and automated monitoring of all deployed Lantronix Console Managers and connected IT equipment, along with real-time notifications, managed APIs and data visualization dashboards.

### A Centralized IT Asset Directory with Instant Search

Through a VPN-free, secure portal, ConsoleFlow provides a centralized directory for accessing console managers and all connected devices in a data center, development lab or a remote branch office with a simple click. Its powerful search capability allows for quick searches to find console managers and connected IT assets by their names, status, location tags or data fields.

### Real-Time Network Performance Monitoring & Alerts

ConsoleFlow's automated performance monitoring feature helps network engineers identify network issues through built-in and custom probes for monitoring availability of critical network services such as DHCP, DNS and performance metrics such as jitter, and throughput. Rules and alerts allow IT personnel to be alerted through email, SMS, and push notifications. Turn insight into action before issues become incidents.

### Aggregation & Data Visualization

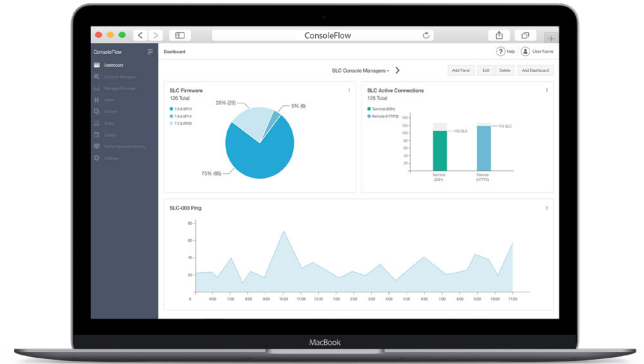
ConsoleFlow provides managed REST APIs to aggregate and monitor data from home-grown scripts, tools and other IT assets along-side with data from console managers. Customizable dashboards allow IT personnel to visualize data to spot trends or anomalies. The managed REST APIs also enable integration of ConsoleFlow with existing IT workflows.

### Mobile Access

ConsoleFlow's native iOS and Android mobile applications provide users with an added level of convenience for monitoring their IT assets from anywhere, anytime.

### Flexible Deployment Options

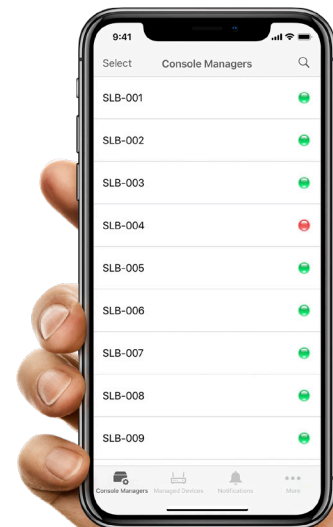
ConsoleFlow is available as a cloud-based software-as-a-service, and as a virtual appliance for on-premise deployments.



SLB™ Branch Office Manager



SLC™ 8000  
Advanced Console Manager





# ConsoleFlow™ Key Features

## Deployment

- ✔ Virtual appliance for on-premise deployment
- ✔ Lantronix-hosted public cloud offering

## Authentication

- ✔ 2-factor authentication for added security
- ✔ Built-in user database
- ✔ Integration with LDAP and SSO

## Access Control

- ✔ Hierarchical role-based with groups
- ✔ Fine-grained access control down to the port
- ✔ User-level tokens for APIs

## Performance Monitoring

- ✔ Cisco IP-SLA compatible protocol
- ✔ Ping, DNS lookup, UDP, TCP, Jitter, response time
- ✔ Time-wheel scheduler

## APIs

- ✔ APIs for querying directory/inventory, status
- ✔ APIs for send/receiving data over console ports
- ✔ APIs for collecting data, monitoring and visualization

## Rules & Notifications

- ✔ Customizable rules for statistics and data
- ✔ Email, SMS and push notifications

## Mobile Application

- ✔ Native application for iOS and Android
- ✔ Directory, search and status
- ✔ Real-time statistics
- ✔ Notifications with history



For more information, visit:

[www.lantronix.com/consoleflow](http://www.lantronix.com/consoleflow)

Contact Us:

[www.lantronix.com/about-us/contact/](http://www.lantronix.com/about-us/contact/)

## The ConsoleFlow™ Difference

	Common Console Server Management Software	Lantronix ConsoleFlow	Customer Benefit
Directory	Console managers and direct attached devices	Console managers, direct attached devices, network attached devices, scripts/tools using REST API	Monitor IT equipment connected over Ethernet and network performance
Terminal Access	SSH, May not work across firewalls	Web-based terminal tunneled over websockets for firewall traversal	Deploy in public clouds for centralized access to your geographically distributed sites, with or without VPN
Mobile Application	-	Yes; iOS and Android	Anytime, anywhere access to infrastructure status, performance statistics and real time notifications
Monitor Other Ethernet-connected IT Equipment	-	Yes	Periodically ping and monitor critical networked devices or application services. Get notified
Bring Your Own Workflows	-	Yes using REST APIs	Integrate out-of-band management into your IT workflows
Bring Your Own Data	-	Yes using REST APIs	Write simple scripts to collect all sorts of data from your applications, equipment, sensors and then use ConsoleFlow to monitor and visualize the data

