

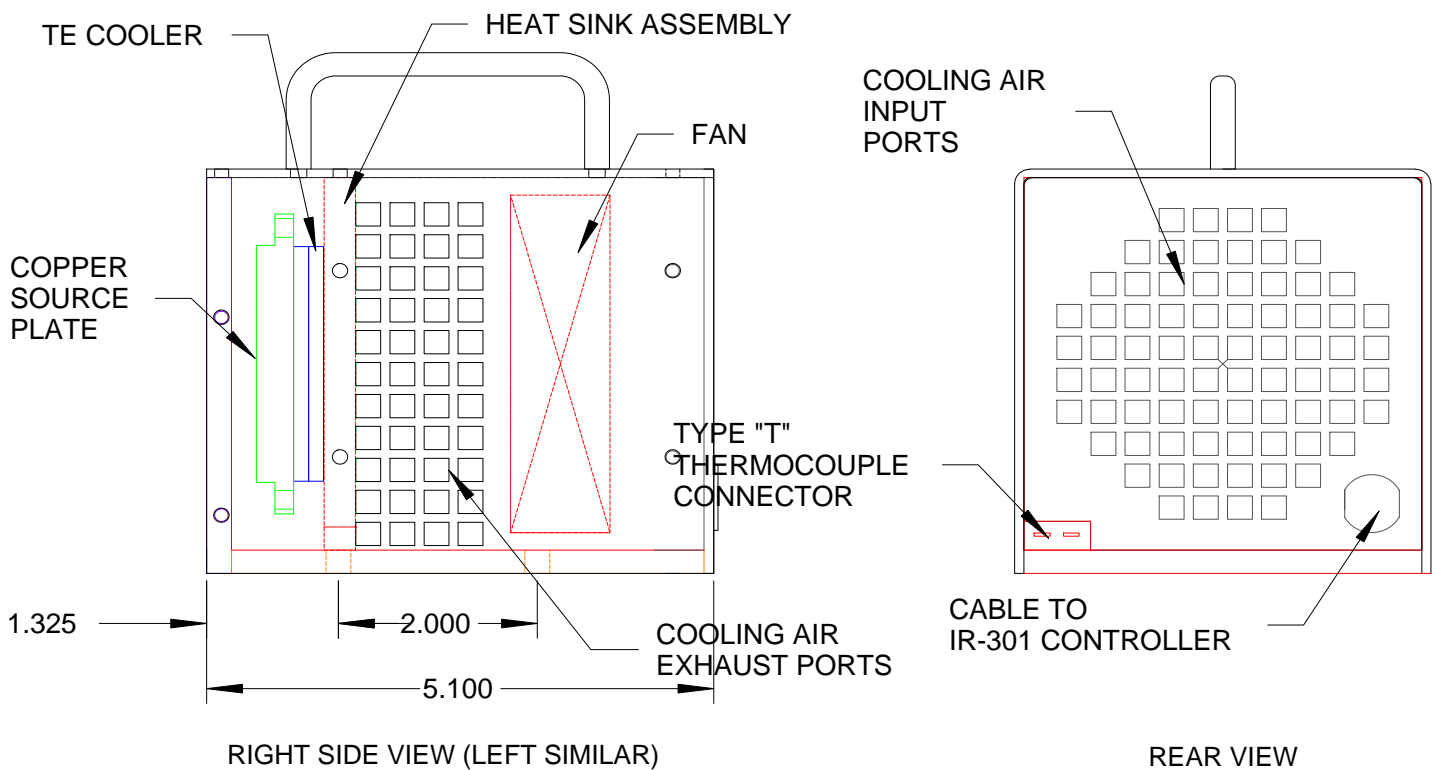
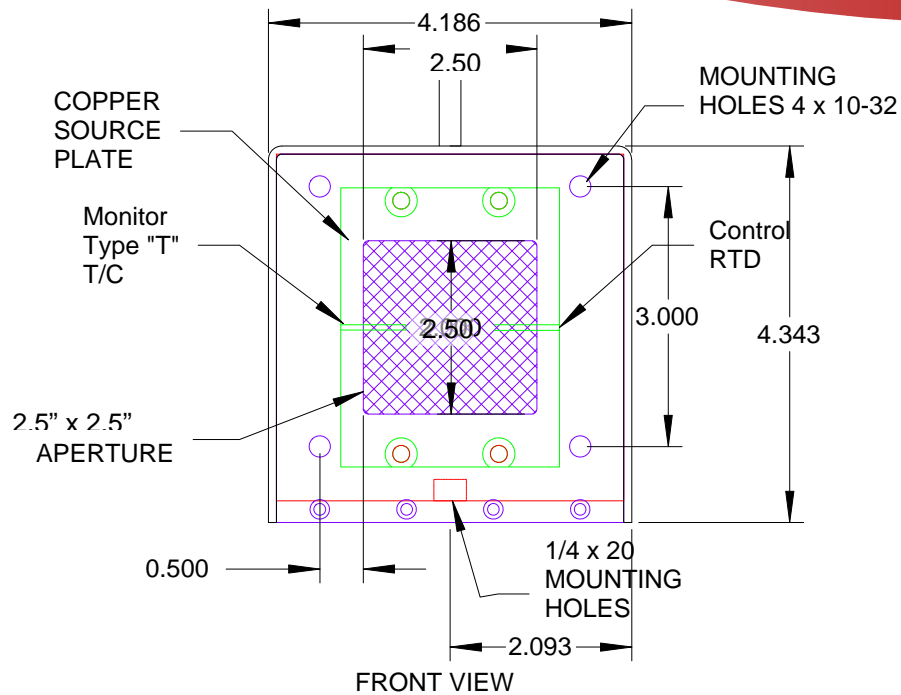
**2.5" x 2.5"**  
**-5 to 145 °C**

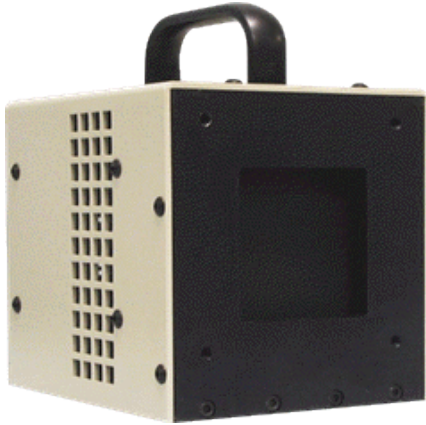
### **Specifications:**

**Temperature Range:** -5 – + 145 C  
**Emittance Watts/Cm<sup>2</sup> (Watts):** .17 (5.4)  
**Wavelength Range:** 1-99 um  
**Emissivity:** 0.96 +/- 0.02  
**Emitter Size: in (mm)** 2.5" x 2.5" (63.5 x 63.5)  
**Source Type:** Extended Area  
**Temperature Resolution:** 0.1 C  
**Calibration Accuracy:** +/- 0.2 C to NIST Standard  
**Stability: Short (Long) Term:** +/- 0.1 C (+/- 0.2C)  
**Response Time:** Ambient – Max <20 Min  
**Temperature Sensors:** Platinum RTD & Type T  
**Control Type:** Active Multi-Band P.I.D.  
**Line Voltage:** 90 to 125 or 208-240 VAC 50-60 Hz  
**Power Requirements:** 200 Watts Max  
**Cable Length:** 8 Feet (2.4 m)  
**Dimensions: in (mm)** **Source:** 4.25" H x 4.25" D x 5" W (108x108x127)  
**Controller:** 5.1"H x 13.4"D x 12"W (130x340x304)  
**Warranty:** 1 Year  
**Standard Apertures:** 2.5" x 2.5" (63.5 x 63.5)  
**Remote Interface:** RS-232, RS-485 or IEEE-488/GPIB

Infrared Systems Development introduces a NEW Low-Cost Thermo-Electrically cooled / Heated blackbody source. The 0.375" Thick solid Copper Emitter plate provides superior uniformity and energy emission. Our Proprietary High Emissivity Black Coating provides >0.95 uniform Emissivity from 0.8 to 30 um. A Type "T" Thermocouple is embedded in the emitter plate to allow independent monitoring and calibration of the surface temperature. The IR-2100 series offers stability and uniformity comparable to competitive systems costing more than \$20,000 for a fraction of their costs, providing the best cost to performance ratio.

# IR-2100/301 DIMENSIONS

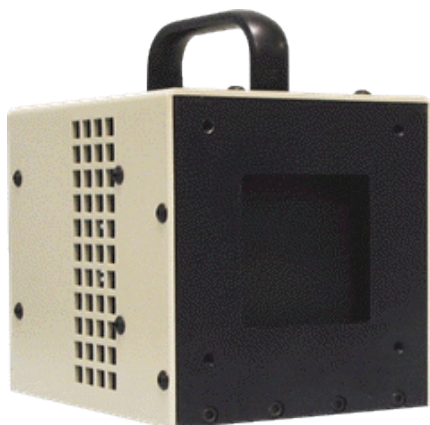




### Specifications:

Temperature Range:	-30 to +75 C
Emittance Watts/Cm <sup>2</sup> (Watts):	.17 (5.4)
Wavelength Range:	1-99 um
Emissivity:	0.96 +/- 0.02
Emitter Size: in (mm)	2" x 2" (50.8 x 50.8)
Source Type:	Extended Area
Temperature Resolution:	0.1 C
Calibration Accuracy:	+/- 0.2 C to NIST Standard
Stability: Short (Long) Term:	+/- 0.1 C (+/- 0.2C)
Response Time:	Ambient – Max <20 Min
Temperature Sensors:	Platinum RTD & Type T
Control Type:	Active Multi-Band P.I.D.
Line Voltage:	90 to 125 or 208-240 VAC 50-60 Hz
Power Requirements:	200 Watts Max
Cable Length:	8 Feet (2.4 m)
Dimensions: in (mm) Source:	4.25" H x 4.25" D x 5" W (108x108x127)
Controller:	5.1"H x 13.4"D x 12"W (130x340x304)
Warranty:	1 Year
Standard Apertures:	2.5" x 2.5" (63.5 x 63.5)
Remote Interface:	RS-232, RS-485 or IEEE-488/GPIB

Infrared Systems Development introduces a NEW Low-Cost Thermo-Electrically cooled / Heated blackbody source. The 0.375" Thick solid Copper Emitter plate provides superior uniformity and energy emission. Our Proprietary High Emissivity Black Coating provides >0.95 uniform Emissivity from 0.8 to 30 um. A Type "T" Thermocouple is embedded in the emitter plate to allow independent monitoring and calibration of the surface temperature. The IR-2100 series offers stability and uniformity comparable to competitive systems costing more than \$20,000 for a fraction of their costs, providing the best cost to performance ratio.



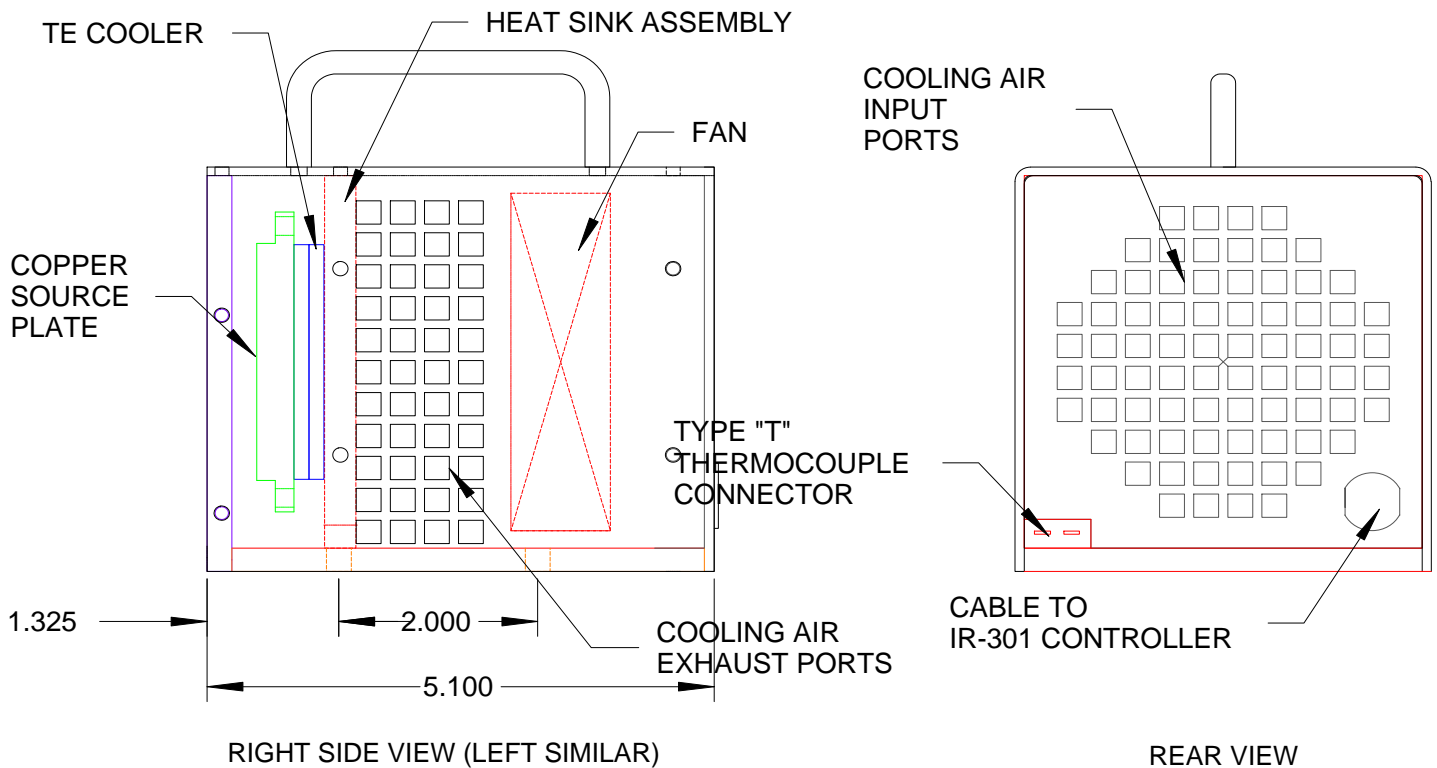
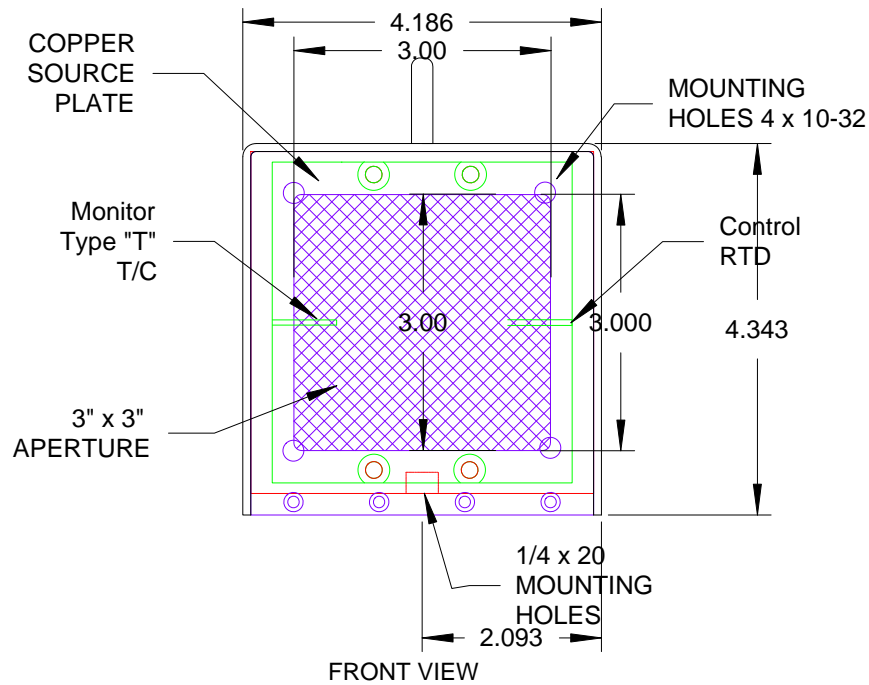
3" x 3"  
-5 to 145 °C

### **Specifications:**

**Temperature Range:** -5 – + 145 C  
**Emittance Watts/Cm<sup>2</sup> (Watts):** .17 (7.75)  
**Wavelength Range:** 1-99 um  
**Emissivity:** 0.96 +/- 0.02  
**Emitter Size: in (mm)** 3" x 3" (76.2 x 76.2)  
**Source Type:** Extended Area  
**Temperature Resolution:** 0.1 C  
**Calibration Accuracy:** +/- 0.2 C to NIST Standard  
**Stability: Short (Long) Term:** +/- 0.1 C (+/- 0.2C)  
**Response Time:** Ambient – Max <20 Min  
**Temperature Sensors:** Platinum RTD & Type T  
**Control Type:** Active Multi-Band P.I.D.  
**Line Voltage:** 90 to 125 or 208-240 VAC 50-60 Hz  
**Power Requirements:** 200 Watts Max  
**Cable Length:** 8 Feet (2.4 m)  
**Dimensions: in (mm)** **Source:** 4.25" H x 4.25" D x 5" W (108x108x127)  
**Controller:** 5.1"H x 13.4"D x 12"W (130x340x304)  
**Warranty:** 1 Year  
**Standard Apertures:** 3" x 3" (76.2 x 76.2)  
**Remote Interface:** RS-232, RS-485 or IEEE-488/GPIB

Infrared Systems Development introduces a NEW Low-Cost Thermo-Electrically cooled / Heated blackbody source. The 0.375" Thick solid Copper Emitter plate provides superior uniformity and energy emission. Our Proprietary High Emissivity Black Coating provides >0.95 uniform Emissivity from 0.8 to 30 um. A Type "T" Thermocouple is embedded in the emitter plate to allow independent monitoring and calibration of the surface temperature. The IR-2100 series offers stability and uniformity comparable to competitive systems costing more than \$20,000 for a fraction of their costs, providing the best cost to performance ratio.

# IR-2103/301 DIMENSIONS



# IR-2106/301

## EXTENDED AREA BLACKBODY



6" x 6"  
5 to 150 °C

### Specifications:

Temperature Range:	5 to 150 C
Emittance Watts/Cm <sup>2</sup> (Watts):	.17 (5.4)
Wavelength Range:	1-99 um
Emissivity:	0.96 +/- 0.02
Emitter Size: in (mm)	6" x 6" (152.4 x 152.4)
Source Type:	Extended Area
Temperature Resolution:	0.1 C
Calibration Accuracy:	+/- 0.2 C to NIST Standard
Stability: Short (Long) Term:	+/- 0.1 C (+/- 0.2C)
Response Time:	Ambient – Max <20 Min
Temperature Sensors:	Platinum RTD & Type T
Control Type:	Active Multi-Band P.I.D.
Line Voltage:	90 to 125 or 208-240 VAC 50-60 Hz
Power Requirements:	200 Watts Max
Cable Length:	8 Feet (2.4 m)
Dimensions: in (mm)	Source: 8" H x 8" D x 8" W (203.2x203.2x203.2)
Controller:	5.1"H x 13.4"D x 12"W (130x340x304)
Warranty:	1 Year
Standard Apertures:	6" x 6" (152.4 x 152.4)
Remote Interface:	RS-232, RS-485 or IEEE-488/GPIB

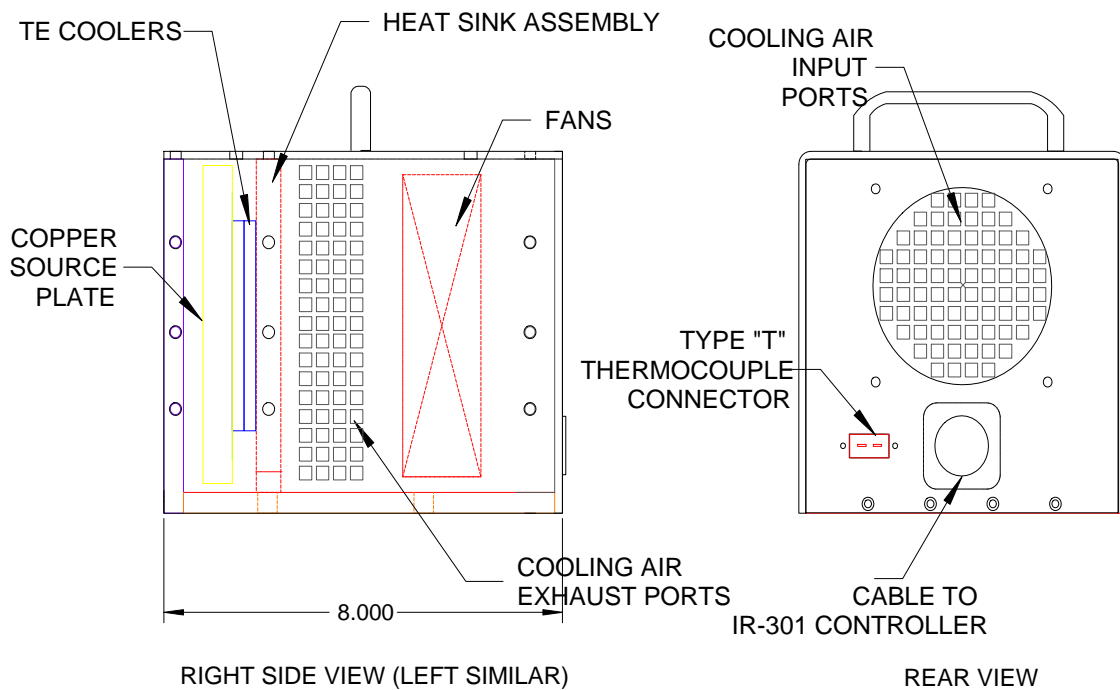
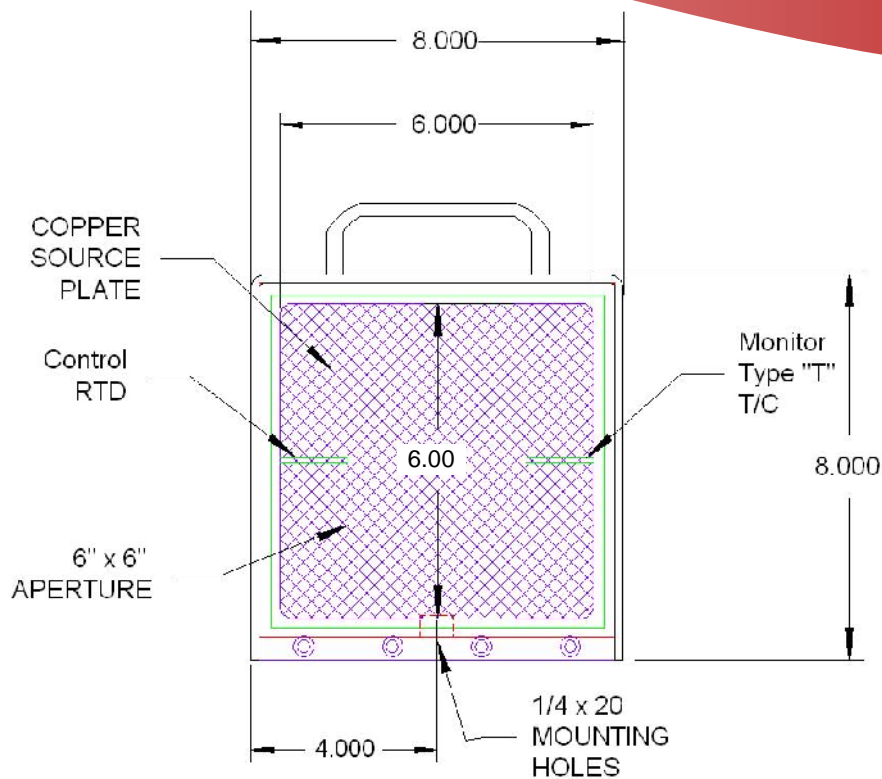
Infrared Systems Development introduces a NEW Low-Cost 6" x 6" Thermo-Electrically cooled / Heated blackbody source with a temperature range of 5°C to 150°C. The solid Copper Emitter plate provides superior uniformity and energy emission. Our Proprietary High Emissivity Black Coating provides >0.95 uniform Emissivity from 0.8 to 30 um. A Type "T" Thermocouple is embedded in the emitter plate to allow independent monitoring and calibration of the surface temperature. The IR-2106 offers maximum reliability, stability and uniformity comparable to those of competitive systems, but at less than half the cost, providing the best cost to performance ratio.

7319 SANDSCOVE CT. #4 Φ WINTER PARK, FL 32792  
(TEL) 407-679-5101 Φ (FAX) 407-679-5520

[SALES@INFRAREDSYSTEMS.COM](mailto:SALES@INFRAREDSYSTEMS.COM) [HTTP://WWW.INFRAREDSYSTEMS.COM](http://WWW.INFRAREDSYSTEMS.COM)



# IR-2106/301 DIMENSIONS



**IR-140/301**

**EXTENDED AREA  
BLACKBODY**



**12" x 12"  
230 °C**

**Specifications:**

**Temperature Range:** Amb – 230C  
**Emittance Watts/Cm<sup>2</sup> (Watts):** .36 (334)  
**Wavelength Range:** 1 - 99um  
**Emissivity:** 0.96 +/- 0.02  
**Emitter Size: in (mm)** 12" x 12" (304 x 304)  
**Source Type:** Extended Area  
**Temperature Resolution:** 0.1C  
**Calibration Accuracy:** +/- 0.2 C to NIST Standard  
**Stability: Short (Long) Term:** +/- 0.1 C (+/- 0.2C)  
**Response Time:** Ambient – Max < 50 Minutes  
**Temperature Sensors:** Platinum RTD & Type T  
**Control Type:** Active Multi-Band P.I.D.  
**Line Voltage:** 90 to 125 or 208-240 VAC 50-60 Hz  
**Power Requirements:** 1500 Watts Max  
**Cable Length:** 8 Feet (2.4 m)  
**Dimensions: in (mm)** **Source:** 17" H x 17" D x 17" W (432x432x432)  
**Controller:** 5.1"H x 13.4"D x 12"W (130x340x304)  
**Warranty:** 1 Year  
**Standard Apertures:** 12" x 12" (304 x 304 mm)  
**Remote Interface:** RS-232, RS-485 or IEEE-488/GPIB

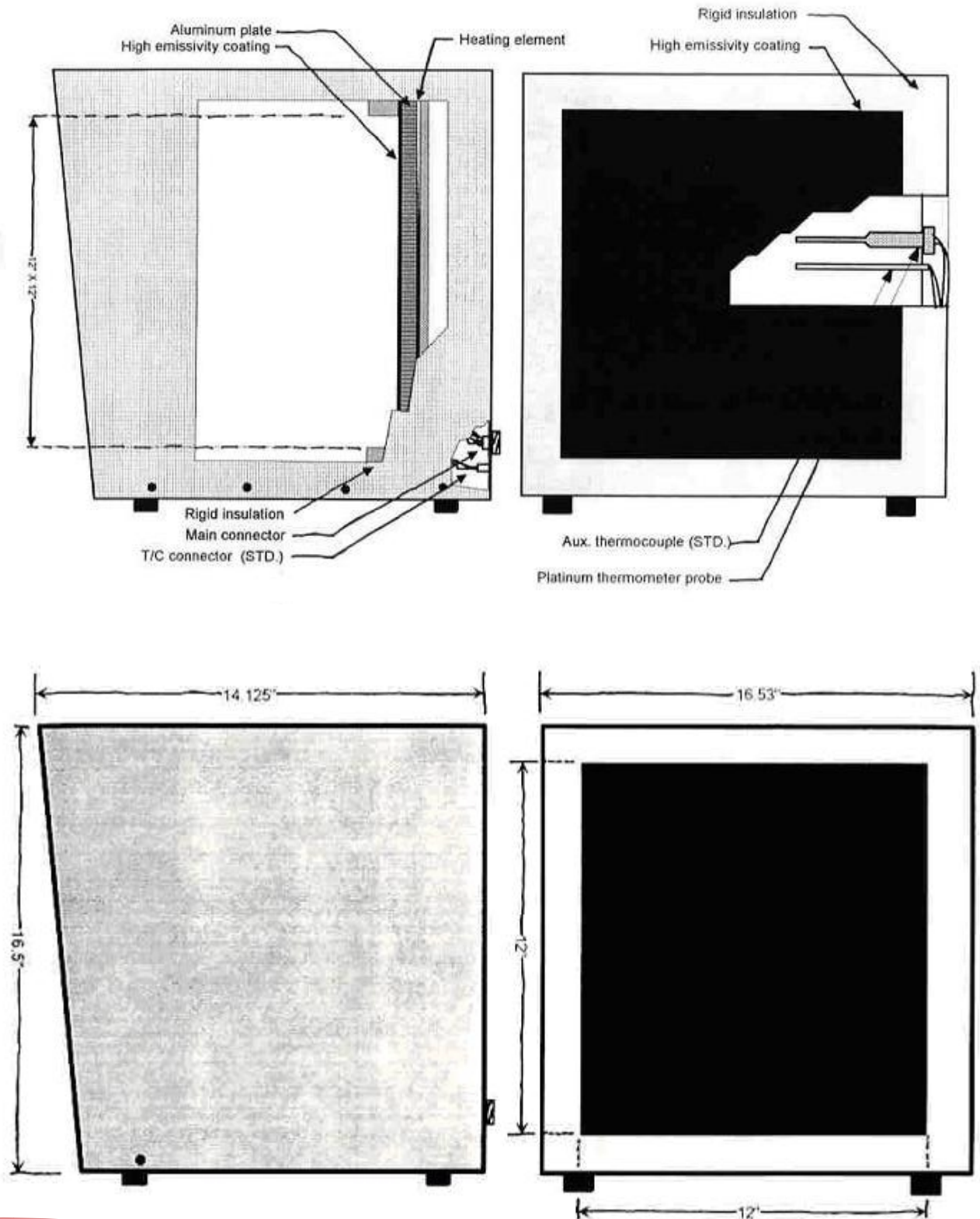
**7319 SANDSCOVE CT. #4 Φ WINTER PARK, FL 32792**

**(TEL) 407-679-5101 Φ (FAX) 407-679-5520**

**SALES@INFRAREDSYSTEMS.COM HTTP://WWW.INFRAREDSYSTEMS.COM**



# IR-140/301 DIMENSIONS



7319 SANDSCOVE CT. #4  $\Phi$  WINTER PARK, FL 32792

(TEL) 407-679-5101  $\Phi$  (FAX) 407-679-5520

[SALES@INFRAREDSYSTEMS.COM](mailto:SALES@INFRAREDSYSTEMS.COM) [HTTP://WWW.INFRAREDSYSTEMS.COM](http://WWW.INFRAREDSYSTEMS.COM)

## EXTENDED AREA BLACKBODY

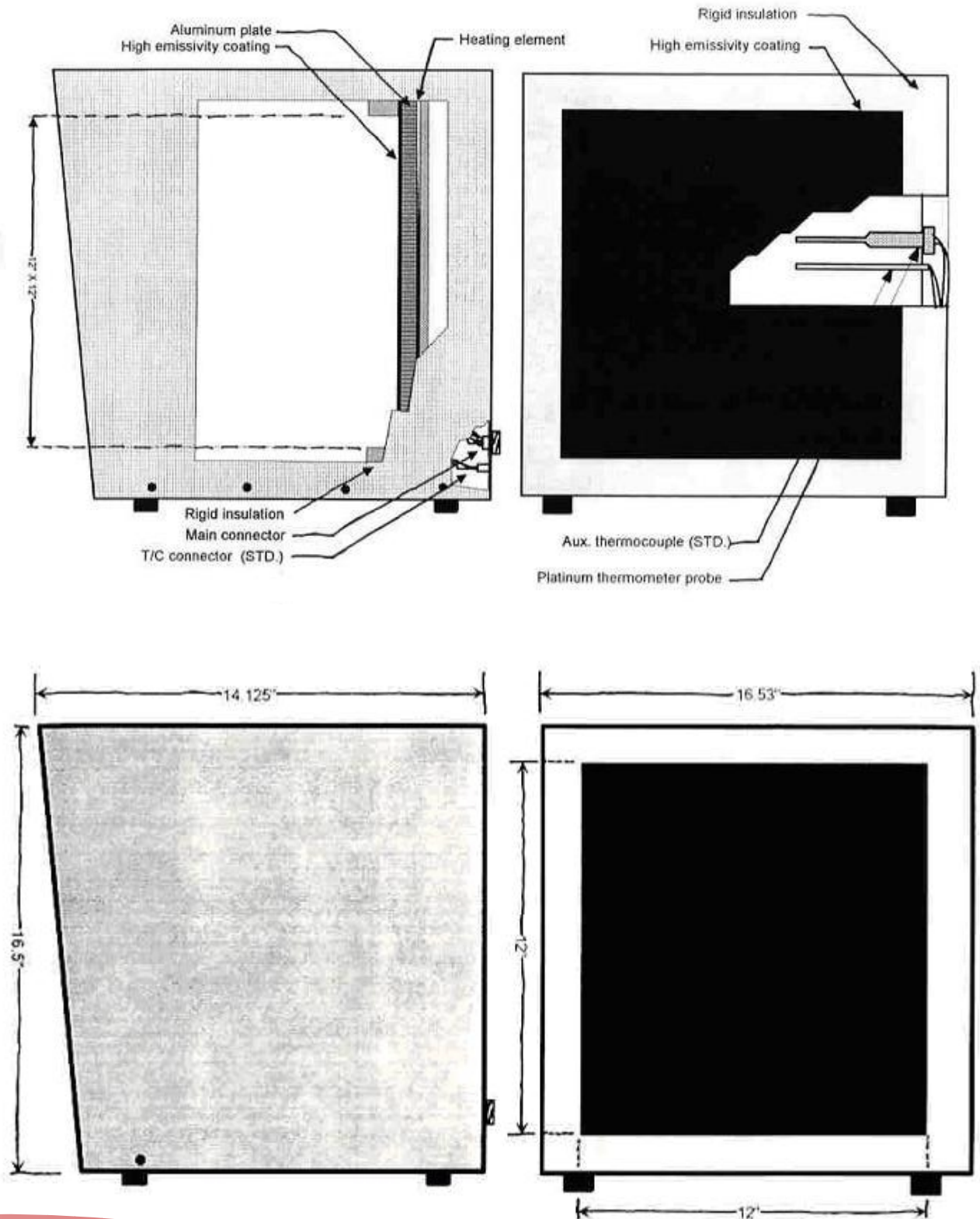


**12" x 12"**  
**350 °C**

### **Specifications:**

**Temperature Range:** Amb – 350C  
**Emittance Watts/Cm<sup>2</sup> (Watts):** .85 (789)  
**Wavelength Range:** 1 - 99um  
**Emissivity:** 0.96 +/- 0.02  
**Emitter Size: in (mm)** 12" x 12" (304 x 304)  
**Source Type:** Extended Area  
**Temperature Resolution:** 0.1C  
**Calibration Accuracy:** +/- 0.2 C to NIST Standard  
**Stability: Short (Long) Term:** +/- 0.1 C (+/- 0.2C)  
**Response Time:** Ambient – Max < 50 Minutes  
**Temperature Sensors:** Platinum RTD & Type T  
**Control Type:** Active Multi-Band P.I.D.  
**Line Voltage:** 90 to 125 or 208-240 VAC 50-60 Hz  
**Power Requirements:** 2000 Watts Max  
**Cable Length:** 8 Feet (2.4 m)  
**Dimensions: in (mm) Source:** 17" H x 17" D x 17" W (432x432x432)  
**Controller:** 5.1"H x 13.4"D x 12"W (130x340x304)  
**Warranty:** 1 Year  
**Standard Apertures:** 12" x 12" (304 x 304 mm)  
**Remote Interface:** RS-232, RS-485 or IEEE-488/GPIB

# IR-160/301 DIMENSIONS



7319 SANDSCOVE CT. #4 Φ WINTER PARK, FL 32792

(TEL) 407-679-5101 Φ (FAX) 407-679-5520

[SALES@INFRAREDSYSTEMS.COM](mailto:SALES@INFRAREDSYSTEMS.COM) [HTTP://WWW.INFRAREDSYSTEMS.COM](http://WWW.INFRAREDSYSTEMS.COM)

**IR-150/301**

## **EXTENDED AREA BLACKBODY**



**12" x 12"  
500 °C**

### **Specifications:**

**Temperature Range:** Amb – 500C  
**Emittance Watts/Cm<sup>2</sup> (Watts):** 2.02 (1876)  
**Wavelength Range:** 1 - 99um  
**Emissivity:** 0.96 +/- 0.02  
**Emitter Size: in (mm)** 12" x 12" (304 x 304)  
**Source Type:** Extended Area  
**Temperature Resolution:** 0.1C  
**Calibration Accuracy:** +/- 0.2 C to NIST Standard  
**Stability: Short (Long) Term:** +/- 0.1 C (+/- 0.2C)  
**Response Time:** Ambient – Max < 50 Minutes  
**Temperature Sensors:** Platinum RTD & Type S  
**Control Type:** Active Multi-Band P.I.D.  
**Line Voltage:** 208-240 VAC 50-60 Hz  
**Power Requirements:** 4500 Watts Max  
**Cable Length:** 8 Feet (2.4 m)  
**Dimensions: in (mm)** **Source:** 17" H x 17" D x 17" W (432x432x432)  
**Controller:** 5.1"H x 13.4"D x 12"W (130x340x304)  
**Warranty:** 1 Year  
**Standard Apertures:** 12" x 12" (304 x 304 mm)  
**Remote Interface:** RS-232, RS-485 or IEEE-488/GPIB

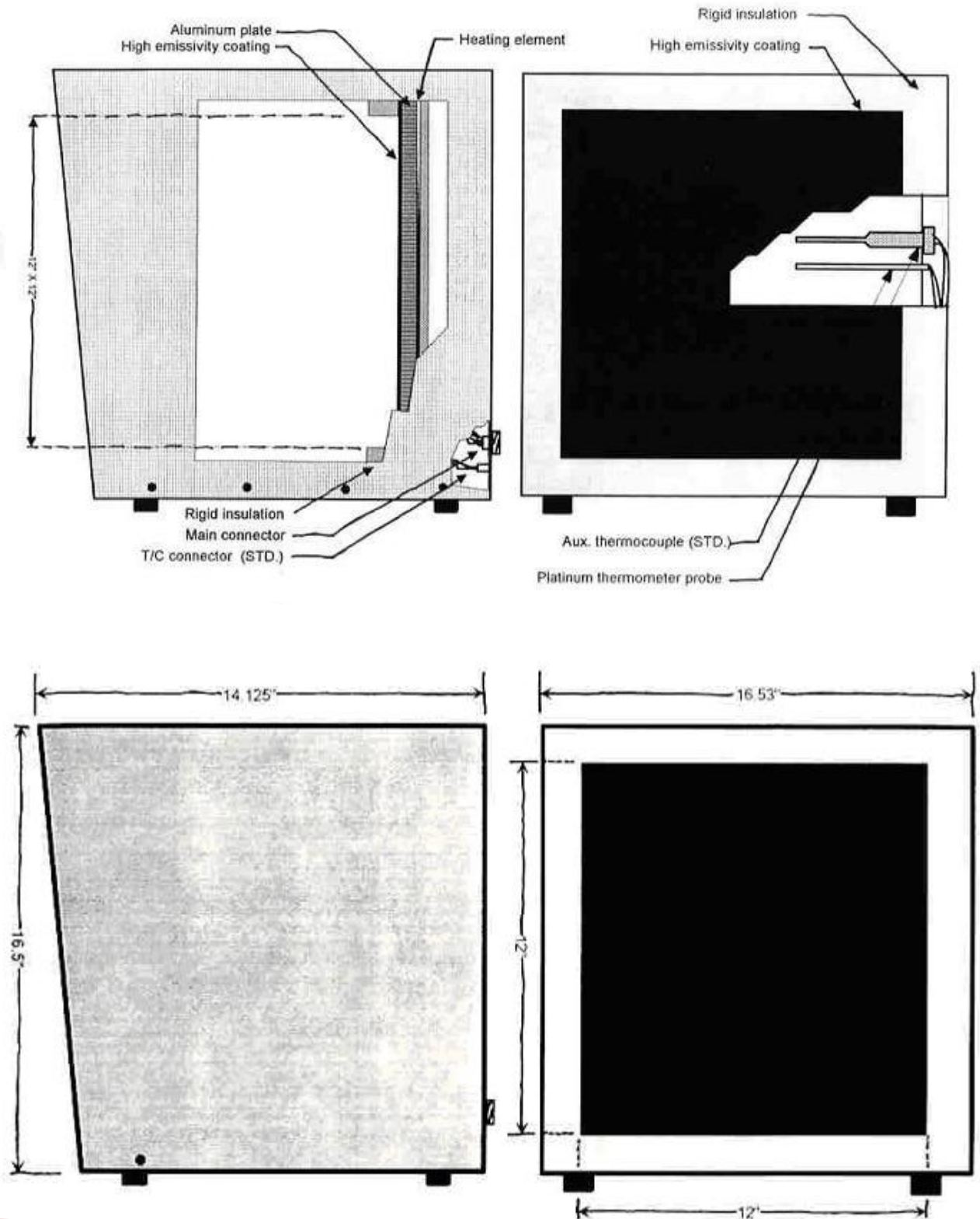
**7319 SANDSCOVE CT. #4 Φ WINTER PARK, FL 32792**

**(TEL) 407-679-5101 Φ (FAX) 407-679-5520**

**SALES@INFRAREDSYSTEMS.COM   HTTP://WWW.INFRAREDSYSTEMS.COM**



# IR-150/301 DIMENSIONS



7319 SANDSCOVE CT. #4  $\Phi$  WINTER PARK, FL 32792

(TEL) 407-679-5101  $\Phi$  (FAX) 407-679-5520

[SALES@INFRAREDSYSTEMS.COM](mailto:SALES@INFRAREDSYSTEMS.COM) [HTTP://WWW.INFRAREDSYSTEMS.COM](http://WWW.INFRAREDSYSTEMS.COM)